

Theydon Bois Issue 124 June 2024 Village News



The Family Take a Stroll

Theydon Bois Parish Council - Chairman's Report

The District and Parish Council Elections took place on May 2nd and you may have noticed that the Parish Council election was uncontested and therefore did not appear on the ballot paper. With the exception of Paul Morris, all existing Parish Councillors were happy to stand for a further term meaning that the Council will have a very familiar look. They say consistency is a good thing!

At the Parish Annual Meeting on Thursday 16th May, I was happy to be re-elected as Chairman for a further 12 months with Cllr. Anthony Purkiss again elected as Vice Chairman.

With regard to the District Council elections, may I pass on my congratulations to Cllr. Clive Amos, Cllr. Tippy Cornish and Cllr. Sue Jones after being elected as our District Councillors in the enlarged Ward of Theydon Bois with Passingford. I hope and trust that they will be happy to work with the Parish Council to ensure that the special character of our Village is maintained and that the Green Belt which surrounds it is protected.

For the second report in a row, I find myself commenting on a potentially controversial development in the Village. On Wednesday 15th May a Public Meeting was held in the Village Hall where plans were shared for the redevelopment of the Balti House site in Station Approach.

The site has been acquired by the RK Group, who are based in Loughton, and to their credit were happy to attend the Public Meeting to gain feedback on their plans for the site. Their presentation showed a four storey development containing ten apartments, an enlarged restaurant, work spaces on the first floor, ten parking spaces and a small coffee shop. It is fair to say that the plans were not well received by the vast majority of the local residents who attended the meeting.

The developer stressed that their plans were not yet a formal planning application and we wait to see if they amend the plans following the exchange of views expressed on the evening. The plans will be made available for all to view on the Parish Council website shortly.

Regarding other developments in the Village, users of Loughton Lane will have noted the extensive works being carried out to replace the pathway between Hornbean Road and Graylands. My thanks to Cllr. Anthony Purkiss who has been 'encouraging' Essex Highways for some considerable time to start this project. The Parish Council are contributing to the cost. The result will be a much safer path for use by residents and particularly the many children walking to and from Davenant School.

Also, by the time you are reading this report, training will have been undertaken by a number of volunteers who have agreed to assist with the Village Emergency Plan. The Parish Council, in a project led by Cllr. Peter Cowup, has undertaken a fundamental review of the plan. Although, obviously it is hoped that it would never be used, it is comforting to know that procedures and volunteers are in place should an emergency situation occur in the Village.



Councillor Peter Gooch
Chairman Theydon Bois Parish Council



Theydon Bois Parish Council - Highways Report

We are pleased works are progressing on the new pavement and kerbing in Loughton Lane from The Green to Graylands. We hope the new higher kerbs will improve safety for schoolchildren and other pedestrians. The works include a new dropped kerb opposite the entrance to the allotments.



This project has taken nearly three years to come to fruition after considerable Essex Highway Officer/Ringway Jacobs opposition, despite the Parish offering funds into the scheme. Originally this was a pilot project under a scheme promoted by the previous Cabinet Member for Highways, whereby Parishes throughout the County could enter into partnership with Essex Highways to facilitate works considered important locally, but of a low priority at County level.

As stakeholders ready to contribute financially, we find it difficult to understand, when you look elsewhere with roads and assets in such a poor state, (e.g. the bottom of Woodredon Hill, as in the photograph opposite, on a major trunk road), why there was such reluctance to engage with the Parish Council?



Clearing of drains and gullies on the viaduct have been carried out, as well as some patching. We await further works on the zebra crossing and Abridge Road as well as the re-instatement of lights on the island at the Piercing Hill crossroads.



Cllr. Anthony Purkiss



Cllr. Pat Gill

Highways Report

News from our District Councillors

My thanks to everyone who voted for me in the local election 2nd May, 2024. As a result of your actions, I was re-elected for another term of four years. Tippy Cornish, who is well known in the village, joins me in thanking everyone for electing her.

Epping Forest District Council held its Annual General Meeting 23rd May 2024. The outgoing Chairman, Cllr. Darshan Sunger, reviewed his year of office and was thanked by several members for his service. Cllr. Les Burrows was then elected as Chairman for 2024-2025 and presented with the chain of office by Cllr. Sunger. Cllr. Louise Mead was elected as Vice Chairman. All the District councillors had been elected or re-elected as every seat had been up for election as a result of the ward boundary changes. Those who were elected for the first time, were particularly welcomed. Tribute was paid to those councillors who had not stood for re-election or who had not been re-elected. Membership of the various committees was agreed. Tippy will serve on the Area Plans Sub Committee East and will be the deputy representative of the Council on the Campaign to Protect Rural England (Essex Branch). I too will serve on the Area Plans Sub Committee East; the District Development Management Committee; the Senior Management Appeals Panel and as Vice Chairman of the Standards Committee. The last two bodies mentioned only meet if needed and it would be good if they did not need to meet.

There are likely to be changes in the way that planning applications are heard. Presently all 54 councillors are members of one of the three sub committees that deal with planning applications in their area, with the District Development Management Committee dealing with issues that cannot be resolved within the sub committees, major applications and other specified matters.

There is a provision in the planning acts that if a planning inspector overturns 10% or more of a planning authority's major development decisions in a given period, developers can apply directly to the inspectorate for a decision and bypass the local authority. Epping Forest District Council had 9.8% of decisions overturned so the Planning Advisory Service (PAS) was asked to look at how it was dealing with planning applications. Basically, the PAS says that there are too many planning committees. There should only be one or at the most two. There are too many councillors involved as members on the committees and there should only be between nine and twelve per committee.

Planning officers are criticised for sometimes making poor presentations to committees and councillors are criticised for taking too parochial a view in respect to their ward, rather than looking at the district as a whole. It is recommended that training is arranged for planning officers and planning committee members. These recommendations are made to bring us into line with other neighbouring planning authorities. The Cabinet agreed that further work should be done on how these recommendations could be implemented and a special meeting of all councillors will be held when proposals will be tabled.

On a personal note, I do not like the existence of the planning inspectorate whereby a single unelected official can overturn the will of a democratically elected body. I recognise that there needs to be an appellate body but I think that this should be the County Council. Please do not hesitate to contact me if you think that I could be of assistance.

Cllr. CLIVE AMOS



News from our District Councillors *(continued)*

I would like to thank everyone who voted for me in the recent local elections. I am delighted to be back at Epping Forest District Council, providing a voice for our village and the rest of the ward of Theydon Bois with Passingford. I will work hard to show everyone my commitment to our village.

I was of course disappointed that I was not returning alongside my fellow Conservative candidates, sitting Councillors Heather Brady and John Philip. John Philip served on the Council for twelve years and had held two of the most crucial portfolios, Planning and Finance. He was a dedicated councillor and while overseeing the emerging Local Plan, he worked tirelessly to establish the railway as a defensible Green Belt boundary resulting several large areas the other side of the railway being removed from the original plan. He will be sorely missed at Council.

At the first cabinet meeting of the civil year the Council considered the next steps following a review from the Planning Advisory Services. The review looked at the performance of the Local Planning Authority and as part of this considers the 'Quality of Majors'. This is the percentage of the decisions made on major planning applications that are subsequently overturned and allowed on appeal. 9.8% of the decisions on major planning applications made by the authority were overturned at appeal, too close to the 10% deemed to be acceptable and puts Epping Forest District Council at risk of being delegated. This is effectively 'special measures' for the authority, and as part of this developers would be able to submit any planning applications directly to the Planning Inspectorate. It is essential the Council retain control over its planing applications; if the Planning Inspectorate makes the decisions, although they would of course still need to take our Local Plan into consideration I fear there would be a presumption in favour of development.

The Council plans to move swiftly on this issue and will be considering the recommendations in the review over the next few weeks prior to making final recommendations to Council. There will be some major changes in the structure of the planing system at EFDC in the future, which will have an impact on all applications, including household applications. I will of course be able to participate in the upcoming discussions and will keep you updated.

One thing that did become apparent whilst I was campaigning prior to the election in May was that many of you felt that it was hard to reach us. Communication is vital and I'm looking at the

possibilities for re-establishing the monthly surgeries I used to run with Cllr Philip. However, in the meantime please do not hesitate to contact me at cllr.sjones@eppingforestdc.gov.uk if I can help, I will.



Mobile Library Service - Use it or Lose it!

Dates for Mobile Library - V Hall Car Park - Every 3 weeks - 12.10 to 12.40pm

18 June	9 July	30 July	20 August
			10 September




Very much part
of the village...



Theydon Bois Offices

SALES & LETTINGS
01992 667 666
theydon@butlerandstag.com

4 Forest Drive, Theydon Bois
Essex CM16 7EY

LAND & NEW HOMES
020 4542 2999
land@butlerandstag.com

12 Coppice Row, Theydon Bois
Essex CM16 7ES

B & S

butlerandstag.uk



**indian
ocean**

The inspiration behind the Indian Ocean is to bring a new way of experiencing Indian food that is very tasty and very authentic. We have achieved this by going back to the roots of Indian cuisine and worked together with professional Chefs from various regions on the Indian subcontinent

10% Discount
on Collection

www.indianoceantheydon.co.uk

Tel: 01992 812658

Theydon
DENTAL SURGERY



- Friendly practice with caring team
- Affordable Private dental treatment
- Routine check ups and scaling
- Cosmetic fillings, crowns and bridges
- Quality full and partial dentures
- Short term adult orthodontics
- Free check ups for children
- Emergency out of hours service
- Visiting Oral Surgeon/Implantologist
- Podiatry Services

DR. MAMTA GUPTA BDS

DR. ANIS JALEEL BDS

23 Forest Drive, Theydon Bois, CM16 7HA

01992 813951

www.theydondentalsurgery.co.uk

email: theydondentalsurgery@btconnect.com

martin
shepherd
 Solicitors LLP

020 8367 3230

gh@martinshepherd.co.uk

www.martinshepherd.co.uk

Your local Wills & Probate Solicitor

Martin Shepherd Solicitors LLP are regulated by the Solicitors Regulation Authority ensuring you receive a high quality, professional service.

Our Wills and Probate Partner is a Theydon Bois resident and can visit you to take your instructions and execute documentation.*

- | | |
|--|------------------|
| ◆ Standard Single Will | £375+VAT |
| ◆ Pair of Mirror Wills for a couple | £470+VAT |
| ◆ Single Property & Financial Affairs or Health & Welfare Lasting Powers of Attorney | £600+VAT |
| ◆ Both a Property & Financial Affairs and a Health & Welfare LPA | £900+VAT |
| ◆ Pair of LPA's for a couple | £1400+VAT |

For an informal chat to discuss your requirements, please call

Gareth Humberstone 020 8367 3230

**Home visits are limited to Epping, Theydon Bois, Loughton and Abridge. When registering an LPA, a court fee is also payable*

Maple House, High Street, Potters Bar, Herts, EN6 5BS



Home Instead
For us it's personal

Live well, your way

Start your home care journey with Home Instead* today
 We tailor our care package to suit your needs, making it possible for you to stay living in your own home where you feel the most comfortable and happiest.

- | | |
|-----------------|-----------------|
| ● Dementia Care | ● Personal Care |
| ■ Home Help | ◆ Companionship |

Contact us to find out more:

T: 01992 666777 E: victoria.rigby@homeinstead.co.uk

W: www.homeinstead.co.uk/epping-forest

Essex Police Information

Checklist for securing your home when you leave it

It's vital to leave your home secure whenever you leave it. Getting into an 'exit routine' can help ensure that you don't forget obvious, important things, like not leaving your valuables near windows, or no lights on if it will be dark before you get home. Here's what you should do just before you go out.

Become a creature of habit

Try to get into the habit of following your own course of action when you lock up your home. This will ensure that you don't forget anything. Here's what we recommend you do before you go out:

- Close and lock all your doors and windows, even if you're only going out for a few minutes.
- Double-lock any door.
- Make sure that any valuables are out of sight.
- Keep handbags away from the letterbox or cat flap and hide all keys including car keys, as a thief could hook keys or valuables through even a small opening.
- Never leave car documents or ID in obvious places such as kitchens or hallways.
- In the evening, shut the curtains and leave lights on.
- If you're out all day, then it's advisable to use a timer device to automatically turn lights and a radio on at night.
- Set your burglar alarm.
- Make sure the side gate is locked.
- Lock your shed or garage.

Lock your bike inside a secure shed or garage, to a robust fitting bolted to the ground or wall, like a ground anchor.

Going away?

Here are five tips to help you keep your home and belongings stay safe while you're away:

1. If you're off on holiday and wish to post anything on social media, make sure your posts aren't public and that they're only seen by your friends
2. Leave lights and a radio on a timer to make the property appear occupied.
3. Get a trusted neighbour to keep an eye on your property or join a Neighbourhood or resident Watch Scheme.
4. Consider asking your neighbours to close curtains after dark and to park on your drive.
5. Remember to cancel newspaper and milk deliveries.



St. Mary's - View from the Vicarage

On February 9th 1851, the current church dedicated to St Mary was consecrated and opened for use for Christian worship. The current building is the second on the current site and the third in the parish, the original building stood on a site on the Abridge Road and there is evidence that it was already in use in the thirteenth century.



Christian worship has been offered in this part of the world for at least the last 800 years, but the beginning of these practices can be traced back to the places where Jesus Christ walked over two thousand years ago. In mid-May, Pentecost Sunday was celebrated and this is a day often referred to as the birthday of the church. In the book Acts, the writer St Luke records how people resident in Jerusalem came together drawn by the sound of people speaking out in many of the languages of the world of the time.

People were able miraculously to hear in a language that they understood of the works of God, how Jesus had died and was risen, and many made a commitment to the new faith, being baptised as a sign of trust in Christ and of joining the new faith community.

St Mary's has three core values, faith, love and community. Our community offers a wide range of services, for example at 10.30am on the first Sunday of the month there is a service of All Age Worship with contemporary songs and on other Sundays there is a service with hymns led by a robed choir. Holy Communion in traditional language is said on Sundays at 8am each week, and the same service is said in more modern language on Wednesday at 10am and Thursday at midday.

The community is not perfect – we make mistakes and get things wrong – but we sincerely seek to live with a spirit of love for Jesus Christ and for one another. A warm welcome awaits at any of the services, if you find yourself asking any of those big life questions, why not give us a try – you never know what you might find.

Life Events

Are you exploring getting married? St Mary's Theydon Bois is available to all residents to celebrate your happy occasions. If you live in the parish and both of you have a UK Passport there is no need to go to the register office prior to the ceremony and a marriage (which is fully legal) can be celebrated within three weeks of booking.

To find out more, please contact the Benefice Office by email to office@theydonparishes.org or by telephone on 01992 814725.



Rev. John Fry
Vicar of the Theydon Parishes
Area Dean of Epping Forest and Ongar

Days Out from Theydon - Royal Gunpowder Mills, Waltham Abbey

Living as we do in Theydon you have probably seen the signs to the Royal Gunpowder Mills whilst on your way to Waltham Abbey. We finally decided to make it a “Day out From Theydon” and were amazed at the extent of the site and its importance, not only during the Second World War but also in the many conflicts fought by the Country – the earliest record of gunpowder being made on the site is from 1665 when 2 people were recorded as being killed by a Powder Mill and the last explosives were manufactured in 1945 at the end of the 2nd World War.

A visit has to be planned in advance as the site is only open to visitors throughout the year on the second and fourth Sundays of each month. Tickets (£15 for adults and £10 for children) can be bought on line at www.royalgunpowdermills.com under “What’s On”.

The Open Days are run by an army of friendly volunteers who are a great source of information. We arrived early and were advised to take the Tractor tour – as we would stand a good chance of seeing some of the deer who roam the woodland – we drove around the extensive site with a running commentary from the driver pointing out the remains of buildings where various processes in making gunpowder and other explosives took place. In many places we could see how they were protected against accidents with walls or mounds of earth.



We were told that Water Mills were used in the production of woollen cloth and before steam power was developed in the 18th Century they were the best source of power for making gunpowder. Many of the buildings had been adapted as processes improved and new products were developed although there are traces of the earliest “Press Mills”. The River Lea and its tributaries made the site ideal for this manufacture and, just as importantly, for transporting the gunpowder around the site and by barge to London. (We also saw several groups of the beautiful fallow deer which inhabit the woodland)!

After our ride we went into the Exhibition Hall to watch an introductory film which explained a lot more about the world-changing discovery of gunpowder by the Chinese in the 9th Century, its development and the addition of newer explosives in the 19th and 20th centuries such as cordite and nitro-glycerine and how these changes affected warfare – some of the displays are inter-active and very accessible to youngsters.



Days Out from Theydon - Royal Gunpowder Mills *(continued)*



Next we visited the Rocket Exhibition with a number of early and more modern rockets – next door you can make your own rocket and watch it being fired (again – great fun for children), whilst the armoury is brought to life by being able to handle a number of the weapons as well as looking at them behind glass.

We ended our visit by a trip on the narrow gauge railway (accessed by a miniature railway) which took us to its two stations – and through the peaceful woodlands where many of the trees are Alders – the wood of which was used to make charcoal.

Because the area is a Site of Special Scientific Interest and protected (much of it not being open to the public) it is a haven for wildlife and given its importance in the history of warfare it is surprisingly serene.



When we visited in May only snacks and drinks were being served in the café so the best option is to take a picnic – there are plenty of places to sit outside and enjoy lunch.

There is also a small gift/book-stall and a playground area for children. We left after several hours having had a most interesting and informative day

which far exceeded our expectations – which I am sure we will remember every time we stop at the traffic lights and see the “Royal Gunpowder Mills “ sign.

LINDA AMES

LUXURY LIVING WITH THE *highest quality care*



Exceptional Luxury Care Home

Bespoke Residential, Nursing, Memory and Respite Care

Offering the highest quality, personalised care, with luxury living facilities and the freedom to explore and enjoy a range of hobbies, Woodland Grove will provide residents the independence and support to continue living life to the fullest together.

Live, Love and Be Loved



OPEN TO ADMISSIONS - BOOK YOUR VISIT TODAY

Call: 0300 303 5445 | Email: clientrelations.wg@oaklandcare.com
www.oaklandcare.com/our-homes/woodland-grove-loughton
 Woodland Grove | Rectory Lane | Loughton | Essex IG10 3RU



NEIL KING

"Thank you for everything you have done, we made the right decision putting our dreams in your hands, you have all been amazing. Please pass our thanks to your whole team"

Mr & Mrs H, Theydon Bois

"Not coming from Theydon Bois (I live in Gloucester), but having to sell a relations house there on her behalf I was fortunate enough to pick Neil King (and the team who work there). They could not have done better!!

The service they provided was the best I have ever experienced (and I have moved a lot). At all times they were on top of things and were there to help and when I was worrying, help me chill out.

They are fantastic and cannot find fault with any aspect of the first class service they provide. Laura King set the standard that others need to follow - fantastic!!!"

Paul Brewster, Theydon Bois

LOCAL ESTATE AGENTS WITH OVER 40 YEARS EXPERIENCE

- Clear, honest, & trustworthy communication
- Friendly & professional service

THEYDON BOIS

Phone: 01992 814054

19 Forest Drive, Theydon Bois CM16 7EX

SOUTH WOODFORD

Phone: 0208 220 9000

10 Electric Parade George Lane,
South Woodford, E18 2LY

Sales: sales@nkres.co.uk

Lettings: lettings@nkres.co.uk



Donkey Derby 14th July 2024

The largest event in Theydon's calendar is coming to the Green on Sunday July 14th - the Donkey Derby. Organised by the scouts, this traditional event has been running since 1987 (give or take a couple of years off for Covid). It is a great event which showcases the village and draws an impressive crowd - with many villagers pitching in to help out on stalls or set up and take down marquees etc on the day.

There are seven races of donkeys ridden by child jockeys (aged 10 to 15) as well as a ferris wheel, chair-o-planes, bouncy castles, climbing wall, bungee trampolines, swingboats and zorbs among the attractions for children.

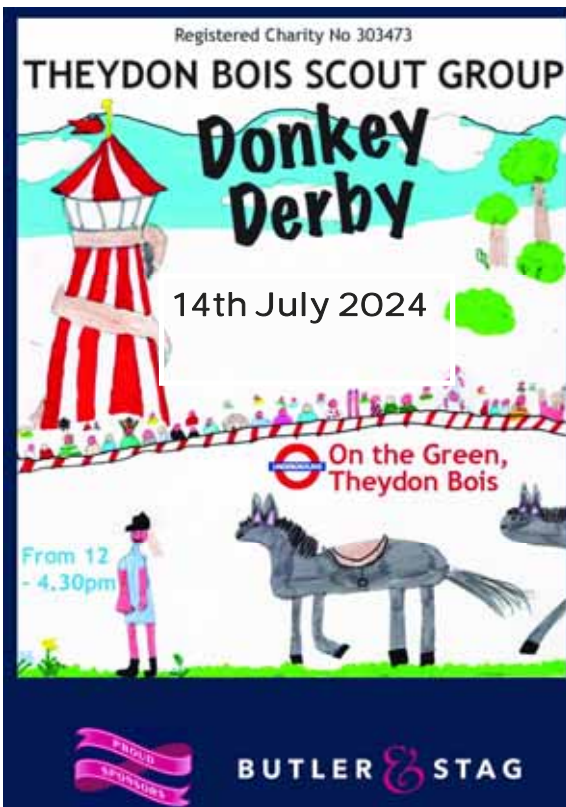
Last year was the first year a Local Craft Area was introduced which enabled people who live locally to show off their homemade wares alongside regular stalls selling clothing, toys and dog treats etc. Local groups including the Church, the PTA and the Preschool also run games stalls and there is the ever-popular smash the crocks stall.

For the competitive people out there, there is a Beat the Buzzer game, fastest tennis serve competition, test of strength stall and Beat The Bar challenge with £100 at stake. This year will also feature Time to Shine dance troupe, the vintage motorbike display plus a singer and a dog show or dog agility show providing the weather is kind. A BBQ is run by the scouts while the Guides have a sweets and homemade cake stall and there is also a tea tent, curry stall from The Balti plus candy floss and popcorn.

Donkey Derby committee chair, Nik O'Flynn, said: "We are pleased to be putting on this large event once again this year. We really could not do it without the army of volunteers who step up on the weekend to offer their time to help out. We hope you enjoy it - being part of it is part of the fun. If you have never seen the event before then please come along and support us, and if you want to volunteer to help please get in touch - the more the merrier!"



All the profits go to local scouting and guiding groups which are represented on the day. To be involved as a volunteer please contact Viv via donkeyderby24@gmail.com. There are plenty of opportunities to help out and be part of this great, traditional event. Budding jockeys (must be competent riders) please email andbowles@gmail.com.



Theydon Bois Pre-School

**COMMITTEE MEMBERS REQUIRED URGENTLY**

Theydon Bois Pre-school Committee - As we come to the end of the academic year we are once again putting a plea out for you to join the pre-school committee. As our children leave the pre-school this year there will no longer be enough members to allow the pre-school to remain open.

This means the pre-school WILL close if there are less than 5 committee members.

If you have children attending next year or are on the waiting list to start, please think about giving some time to the committee. You may be retired or have some spare time you could offer.

You would need a DBS check and EY2 (early years) which will be done through us and would need to meet a minimum of once a term and help to arrange a few fundraising events.

Please get in touch by emailing - tbpschair@gmail.com



Theydon Bois Art Group

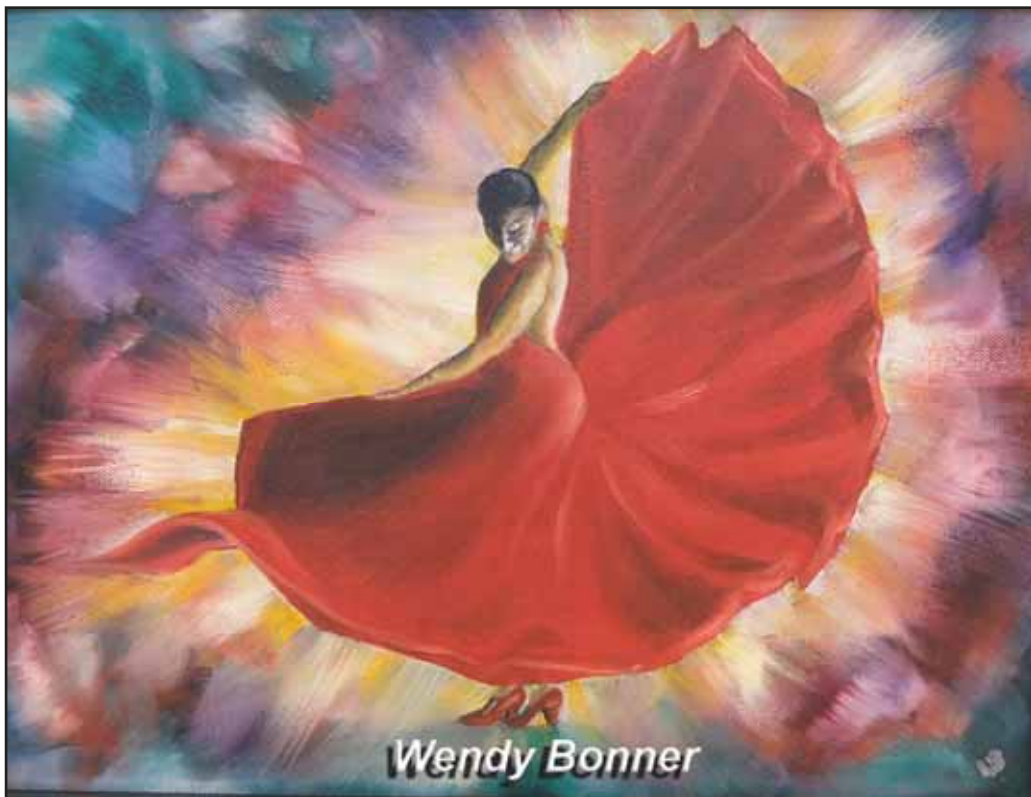
Art Exhibition 2024 - Many art clubs seem to be struggling at the moment. But thanks to our increasing and diverse membership, Theydon Art Group continues to produce an ever-widening range of pictures, of a quality up to gracing the walls of every style of home.

The atmosphere at the 2024 summer exhibition was welcoming as ever, with home-made refreshments always available. Plus an opportunity to support a local charity (and buy a small framed picture at the same time). This year we were able to donate more than £200 to Essex Air Ambulance.

As anyone who has ever organised any event knows, there is far more involved than at first meets the eye. To this end we'd like to thank not only those who organised and set up the show; also those who found somewhere to put up posters; those who helped with staffing; the home-made bakers; Jane Turner and Sue Gibbs for the beautiful flower arrangements.

And we appreciate that often it's not the artist members themselves who do the work, but our Associate (non-painting) members. But most of all we'd like to thank our esteemed customers who came along and bought pictures. Thanks to all!

The regular business of the Art Group includes our popular monthly step-by-step painting demonstrations by visiting professional artists. Non-members are welcome to attend these events. For dates and details go to: www.theydonartgroup.co.uk.



Theydon Bois Art Group (continued)



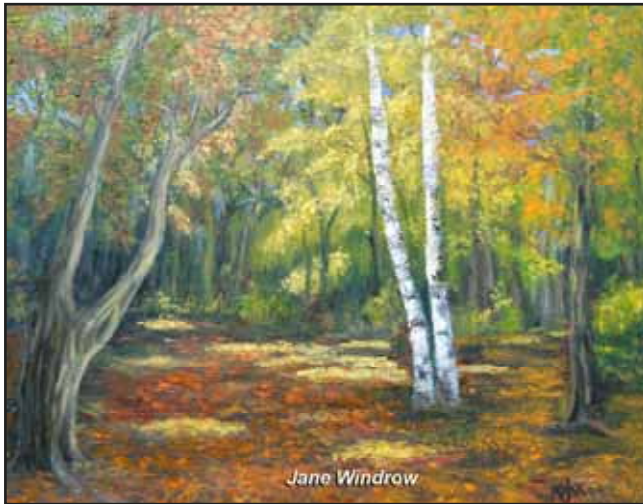
Tacey Reeves



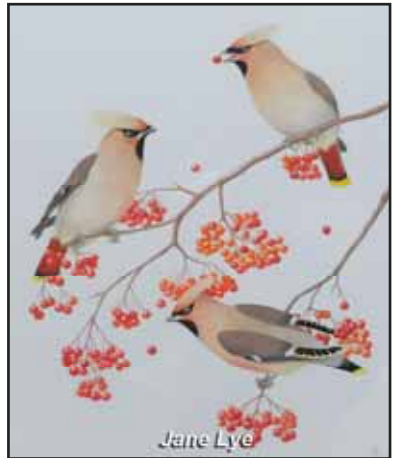
Linda Tilling



Kate Emery



Jane Windrow



Jane Lye



Alan Foster



Anne Harrison

Theydon Bois Action Group

Local Planning Matters - The approval of planning permission for 38 homes on **Land north of Forest Drive, EPF/0292/21**, continues to mystify. At the time of writing, the EFDC website still shows this application's status as 'Under Consultation'. Bearing in mind the application was approved at Plans East Committee on 17 January 2024, we wonder what negotiations are going on behind the scenes before the decision is actually published? A decision taken at District Council cannot be reversed, so what is happening? Certainly, the representative of the developers, Andersons, who approached our Parish Council Chairman after the District meeting saying that he would review the scheme with a view to adding more parking, making the flats accessible and then speak again to the Parish Council, has not done so. No surprise really since these developers didn't see fit to consult with the public prior to putting plans forward for this carbuncle of a development. TBAG call on our Parish Council to take a stand against the approval of this scheme and its complete disregard for several Local and County policies and make a formal complaint to EFDC and the Local Government Ombudsman. TBAG have now written to the Planning Inspectorate seeking clarification on the legitimacy of a Local Authority's ability to ignore its own policies.

Balti House Proposed Development. A public meeting was held on 15 May to listen to a presentation by the architect of this proposed development on the site currently occupied by the Balti House. It was well attended by residents and our Parish and District Councillors, but the overriding reaction was a negative one. Five TBAG Committee members attended, and the Chair and Vice Chair spoke strongly against this inappropriate proposal having examined the proposal document in advance. Not one person from the floor spoke in favour of the proposal which utilises 10 of the 12 dwelling allowance which has been allocated to the THYB.R2 development site – the car park and the now sold-off Balti House site - which was agreed and adopted in the Local Plan in 2023. The proposed building, which has the appearance of a modern office block, towers above existing dwellings at four stories plus solar panels and sports an exceptional amount of glass. The Balti restaurant is rumoured to return to the site on the ground and basement levels, and an additional coffee stand is included. Eight offices are proposed for the first floor with a capacity for about 39 persons. If approved, it will be the first offices to be purpose built in Theydon Bois.

EPF/1195/23: Coppice Row Farm. Proposed detached dwelling. Still under consultation.

Blunts Farm: EPF/2728/22 Erection of new storage buildings etc. Refused permission. **EPF/0830/23 and EPF/0831/23** two alleged flats deemed as unlawful. **EPF/1671/22** Ivy House, previously Blunt's Farmhouse, swimming pool and extension. The appeal was dismissed, and the Planning Inspector cited TBAG and our area calculations in his Appeal Decision.

EPF/2461/22 Mossford Green Nursery, Abridge Road. Six proposed new dwellings. The Planning Inspector dismissed the appeal.

Application for a Temporary Event Notice to hold an outdoor, two-day bank holiday music event for over 18's on the field at the **Former Old Foresters** site. The event, for up to 499 people, was submitted to EFDC and subsequently withdrawn by the organiser following objections from EFDC's Environmental Enforcement Officer.

TBAG would like to welcome with our warmest best wishes our recently elected District Councillors. We feel that these Councillors will focus their efforts on representing residents and the best interests of Theydon Bois village.

Theydon Bois PHARMACY

10 Forest Drive - Telephone 01992 812130 - email: pharmacy.fde36@nhs.net
www.theydonpharmacy.co.uk

For all your Pharmacy Needs & Specialist Health Care
 Please call in or email us to book an appointment for the following services

- Repeat Prescription Service & Text Message Alerts for Collections
- Healthy Living Checks (Private & NHS funded for those eligible)
- Ear Wax Removal Clinic (Microsuction, Otoscopy & Hearing Assessment)
- Vaccination Clinic (Influenza, Covid-19 seasonal boosters & Travel)
- Smoking Cessation Clinic & Sexual Health Services
- Allergy and Food Intolerance testing
- Private Weight Loss Clinic
- Private Prescriber Available

**Full range of Perfumes, Clarins, Blood pressure monitors, Razors, Hair trimmers
 and other small electricals - many at discounted prices**

9am - 1pm & 2pm - 6.30pm - (Mon, Tues, Thurs, Frid) 9am - 1pm & 2pm - 5pm (Wed) 9am - 5pm - (Sat)

Theydon Bois BALTI HOUSE



AWARDED A 5 ★★★★★ FOOD & HYGENE RATING

We invite you to the longest established curry house in Theydon Bois, you will find excellent food and service at reasonable prices, prepared with the highest quality ingredients by our experienced innovative chefs.

10% Discount on Take-Aways



Tel: 01992 813 850 / 814 104

Station Approach, Coppice Row, Theydon Bois, CM16 7EU

Free customer Parking

www.theydonboisbalti.co.uk

DREW & SON

INDEPENDENT FAMILY
FUNERAL DIRECTORS

FROM OUR FAMILY TO YOURS



MAIN OFFICE: ABRIDGE
SUB-BRANCH: THEYDON BOIS

Providing for all your funeral requirements
 Funeral Plans available • 24 hr call out service

01992 676181

drcwansoninfo@gmail.com

www.drcwfunerals.co.uk

The White House, Market Place, Abridge RM4 1UA

Citizens Advice Epping Forest District

Citizens Advice and the General Election



Citizens Advice, both locally and nationally, is independent and impartial. We do not endorse any party or candidate. But based on the experience of the people who seek our help here are some of the national priorities which we think the next government should tackle.

5 million people are living on a negative budget, that is, their costs exceed their income. They are falling further into debt just to cover their essentials. A further 2.3 million people are living on empty - cutting back their spending on essentials to unsafe levels. A new government should legislate to uprate benefits for working age people so as to better reflect the true cost of living, keep increasing the minimum wage, and better support people with high private rent costs.

The private rental sector is a broken market. The number of people we've been helping with a homelessness issue nationally has kept rising since the pandemic. A key driver of this trend is the record numbers of private renters needing help with a Section 21 or 'no fault' eviction notice from their landlord. The next government should end section 21 evictions and deliver reforms that give tenants meaningful security in their homes and protection when things go wrong.

Both tenants and homeowners will need to make big changes for us to get to net zero as a country, such as installing energy efficient measures and heat pumps. But we are starting to see increasing problems in this low-carbon retrofit market, ranging from people being sold the wrong kit for their needs or bad installations, to outright scams.

The next government should set up a mandatory, single quality mark for this sector, deliver access to a statutory consumer protection advice service, and create a redress scheme underpinned by access to an Ombudsman for all installers.

More broadly, we need reform of regulators in all sectors, to hold businesses to higher standards, improve enforcement and bring an effective consumer voice into regulatory decision-making.

Finally, we want a postal service that works for everyone. Royal Mail has failed to meet its delivery targets for nearly half a decade - and is under little pressure to do so as a monopoly provider of letter deliveries.

With the regulator now considering reducing Royal Mail's obligations, we've argued the company should not be rewarded for failure with a licence to slow down deliveries and hike prices. As the official watchdog for postal consumers, Citizens Advice is asking MPs to ensure a postal service that is universal, reliable and affordable.

How to contact Citizens Advice Epping Forest:

- Phone us on 0808 278 7855 between 9.30 and 2.30, Tuesday to Thursday,
- or email via our website - <https://citizensadviceefd.org.uk/>
- or you can talk to an advisor in person at the Hub at the Civic Building in Epping every Thursday between 10 and 2.



THEYDON BOIS OPEN GARDENS

SUNDAY 30TH JUNE 2024

from 12 noon - 5pm

Tickets £5 (cash or card) for adults

Accompanied children free. Sorry, no dogs.

There will be many gardens for you to visit this year.

Call at the Village Hall, Coppice Row, CM16 7ER
on the day to buy your tickets and collect a
map and a list of the gardens. Proceeds from ticket sales
will go to St. Clare Hospice.

You can walk or drive to the gardens as parking is
available throughout the village but
NO PARKING ON THE GREEN.

Refreshments will be available from St. Mary's
Church Hall, next to the Village Hall.

For any further information, please call
Carol - 01992 812250 or
Margaret - 01992 814797



**A JOINT ENTERPRISE BETWEEN THE HORTICULTURAL SOCIETY,
THE PARISH COUNCIL & ST. MARY'S CHURCH**

Theydon Bois Tennis Club

COME TRY TENNIS FOR FREE!

GET INTO THE WIMBLEDON SPIRIT AND PLAY TENNIS

SUNDAY 30TH JUNE

10AM - 2PM

WHERE TO FIND US - END OF SIDNEY ROAD



OPEN DAY

On Sunday June 30th, we will be holding our annual Open Day between 10am and 2pm. We welcome everyone to come along and see what the club has to offer to members of all ages. There will be a variety of activities to watch and take part in, including cardio tennis, pickleball, exhibition matches and a fastest serve competition. Please drop by and meet our coaches, committee and other members. We are a friendly village club, with lots going on. Social sessions run throughout the year, where members of all levels join in for fun tennis, often followed by a drink at our bar. Regular summer suppers are served after social sessions, and these are a great opportunity to meet and get to know other members. For those looking for competitive match play, you will find a team to suit your standard of play. We enter all levels of ladies, mens, mixed, juniors and vets teams into a variety of Essex leagues.

Membership is currently open, and we welcome new members of all abilities and experience. If you have never been a member of TBLTC then you could benefit from a 50% reduction on your subscription in 2024.

If you attend the open day, please enquire about our special reduced fee of £175 for 18 months. See the website for details. <https://clubspark.lta.org.uk/TheydonBoisLawnTennisClub>

Our junior tennis programme runs throughout the year. Our two club coaches, Dave Wright and Heidi Cornwall, guide the juniors through their development and encourage them to achieve their potential. Heidi is one of three finalists in the prestigious National LTA 'Rising Star' awards for her commitment to the club and the juniors she works with.



Pickleball comes to TBLTC- free taster sessions - We are introducing Pickleball this Summer, and offering free taster sessions, with a view to making pickleball a regular weekly

Theydon Bois Cricket Club

Cricket Club Enjoys Good Start To Season

Theydon Bois Cricket Club has enjoyed a good start to the cricket season with both senior elevens comfortably positioned in the top half of their respective divisions in the T. Rippon Mid Essex Cricket League.

The junior cricket has also started strongly with the Friday evening training sessions proving to be as popular as ever with both the children and their parents. The Club has also this year introduced the ECB backed All Stars Cricket Course. These Thursday evenings sessions are for boys and girls aged between 5 and 8 years old and introduces them to the basics of the game as well as having a lot of fun. The picture below is from one of the early sessions.

At the other end of the scale, the Club are pleased to be hosting further Essex Over 50's cricket matches this season. The next scheduled game is on Wednesday 19th June versus Bedfordshire Over 50's. The game starts at 1pm and spectators are very welcome.

The Club is able to offer excellent facilities at the Buxton Trust, Loughton Lane ground. If you are interested in cricket and would like to become a member, either as a player or as a social member, then the Club would like to hear from you. You can be assured of a warm welcome.

Further information on Theydon Bois Cricket Club can be found on their web site at www.tbcc.co.uk



Theydon Bois Golf Club



Absolute beginners swing into action

In April, we were delighted to welcome six new members to our club who joined us upon the launch of our 'New to Golf' Scheme which is designed to introduce complete beginners to the game. Two of them, Caroline and Brenda, have a long-standing connection with the club – their husbands are currently Club Chairman and Club Captain, but until now had never considered taking up golf or joining a club.

Caroline had never considered playing golf before. Horses and riding were her thing. Brenda had flirted with the idea, but never quite found the time. *New to Golf* was just the impetus they needed. Over the last 6 weeks, along with Caron, Karen, Paula and Catherine (it's by no means limited to women), they have enjoyed a series of weekly group lessons with our Head Professional, Kevin Delaney, and are now beginning to get out on the course. The lessons have involved learning the fundamentals of the putting and chipping on the club's practice green, hitting longer shots on our practice area and using latest technology in the club's 'Swing Room' – think computer games with golf clubs.



For Caroline, the best things have been the challenge of learning a new sport and making new friends. Brenda enjoys getting out in the fresh air and enjoying the environment. Our course winds its way through the forest and offers some fantastic views. One of the best – from the third hole, aptly named 'Theydon View' is Caroline's favourite spot on the course and the location of her favourite achievement so far – completing the hole in only three shots.

She is now enjoying hitting good shots regularly, especially long shots with her driver. Brenda, on

the other hand, loves the subtle art of putting on our beautifully manicured greens. They've both enjoyed the social life of the club too. Just because they've been associated with the club doesn't mean they know everyone, and it helps that the ladies' section has a buddy system to help the newcomers settle in. Another of the newbies, Karen, has been enjoying herself so much her son has taken up the game again, his interest having been reignited.

Our New to Golf gang are looking forward to joining other members at the club's quizzes, parties, dinners, days out, music and annual 'Party in the Park on 24th August' (Everyone's invited, perhaps we will see you there).

Naturally we hope that they will all become hopelessly hooked on the game. At only £75 for the six-week course, with all equipment provided, it's an affordable, easy, and welcoming introduction into the club and the world of golf.

**Do you fancy giving New to Golf a go? If so please contact John Turnbull on
01992 813054 or e mail: johnturnbull@theydongolf.co.uk**

Arts Society West Essex

Busy time at The Arts Society West Essex

A warm welcome has been given by the Epping Forest Food Bank and local primary schools to some 100 craft bags designed and produced by The Arts Society West Essex with items given or funded by members. These were delivered for the Easter holidays to children of the Food Bank users and letters of appreciation have been received. The group are now busy preparing the next batch for the summer holidays.”

Another successful TASWE project has been the completion of Trails of Discovery for several local churches culminating in the successful launch of three trails at Chelmsford Cathedral. The Trail Team has now worked hard to complete two garden trails for Copped Hall, launched at their first Open Day of 2024 on 2 June. These are aimed at children 8 -12 years old. See the TASWE website at - theartssocietywestessex.org.uk.

During the early months of this year TASWE members have supported visits to Stationers' Hall, the British Museum, Chelsea, Chislehurst and Tudeley Church. Lectures have included John Ruskin, British Studio Pottery, the work of Banksy, the Australian Impressionists, Brunel, Oscar Wilde - and a homage to the Carrot.

Despite a break from our regular monthly meetings in August a visit to Maldon, featured in the book "Fifty Treasures of Essex" will take place on 21 August and lectures will resume on 4 September with "London Bridged - 3,500 years of crossing the Thames" by Charlie Forman.

Contact: the Hon Secretary, Valerie.locks@icloud.com



Tippy's Topics - Theydon Bois Facebook Groups



A very warm welcome to villagers old and new and welcome to 'Tippy's Topics' our usual round -up of news, views and debates from the Theydon Bois Villagers and All Things Theydon Bois Facebook pages, our warm and friendly centralised 'hub' of discussion and information relating to our wonderful village.

Anyone interested in joining must answer a couple of security questions and thereafter can access all the goings on of our virtual community. Please also note we have a "Free Items in Theydon Bois" facebook page which is thriving.

NEWS FROM MARCH - The Baptist Church introduced after school clubs on Tuesdays, Wednesdays and Saturdays for various age groups, activities include a bouncy castle, music, games and refreshments. It is a great way for children to burn off energy whilst having lots of fun. They have also introduced Karaoke evenings, again a chance to blow away the cobwebs, to listen, to join in, to eat and drink and have a bit of fun.



Connect Plus began carrying out the M11 embankment works and apologised to villagers for the loud noises reverberating around the village during the night. Many villagers had complained due to the lack of sleep caused by this disturbance.

A villager mentioned a number of cars having accidents along Coppice Row, one in particular where the vehicle mounted the pavement and crashed less than half a metre from a home. They emphasised the need for something to be put in place and asked opinion as to what could stop cars speeding along both Coppice Row and Piercing Hill. This brought about a long conversation from many people, highlighting speeding in other nearby areas. There were several complaints regarding vehicles parking on double yellow lines outside of the Tesco Express store which often causes severe disruption, especially from car park users entering Coppice row from various directions and also to pedestrians attempting to cross the road. Individuals were asked to email Holly Whitbread who stated that she would speak to the Highways Panel Officers after previously writing to them regarding the issue.

St Marys Church Hall hosted their annual Lent Soup Lunches at the church hall. Supplying a veritable feast of homemade soups, bread rolls and unlimited tea and coffee for the very economical sum of £5, a reduced £2 for children, with all profits donated to charity.

There was a playground quiz at the cricket club which raised an amazing £1278.00, local businesses were thanked for their generous donations for the raffle prizes.

A villager, who happens to be a dear friend, reported that a burglary had taken place at their property after being left vacant for one hour. Luckily a passing driving instructor called the police who attended and nothing was taken. Everyone agree that this was an awful incident and offered help in any way they could.

Theydon Bois Pre-School hosted a Nearly New Sale on the 23rd March which proved very popular and helped to raise funds for the school. It offered a place to get a bargain item at a fraction of the cost and do our bit for the environment. The event managed to raise £750 and they offered their thanks for the wonderful generosity of attendees.

The Community Cuppa and Repair Cafe held its usual event on the 27th March which always provides a place where one can meet others, chat and relax whilst partaking of cake and a beverage and even having an appliance repaired at the same time, with glowing reports shared by very happy villagers.



Tippy's Topics - Theydon Bois Facebook Groups *(continued)*

NEWS FROM APRIL - Drew and Sons opened their new office in Theydon Bois, villagers welcomed this family run business and commented about the professionalism, care and compassion offered by the owners and highly recommended their service.

NEWS FROM MAY - Cones were placed along Coppice Row to stop drivers parking. Some had argued that the vehicles were causing an obstruction in both ways along the road causing tail backs. Initially a car had parked to carry out works, other vehicles then followed and eventually a host of vehicles caused an issue.

Thanks were given by Frank Foster care home for the "lovely lady" who donated a fish tank to the residents. This was a lovely gesture and a video highlighted the enjoyment of the recipients and the fish enjoying their new home. Everyone agreed this was a very kind gesture.



A two day bank holiday weekend music event was planned in the village for 499 people in a field. However Epping Forest District council's environmental enforcement officers objected to the proposal which was then withdrawn.



Some important information was shared regarding the attempted theft of an elderly gentleman's debit/credit card at St. Margarets Hospital car park. A man in a high vis jacket approached the gentleman whilst an accomplice attempted to distract any onlookers. Mr "High-Vis" began informing the elderly gentleman that he had to pay for his parking and requested his details, luckily the onlookers ignored the second suspect and shouted a warning to the victim. This is not a "one off" or isolated crime. Sadly this happened at a local car park to a villager's elderly mother who was not so lucky. Her card details were stolen along with some of her savings. Please be vigilant and spread the news, especially to the elderly and vulnerable who were the intended victims.

A similar incident occurred on the 20th May with an individual, again donned in a high vis jacket, who stopped an elderly individual driving through Abridge. They informed the intended victim that they had been speeding and that a fine would have to be paid. The victim then handed over their card which was not returned and the culprit withdrew funds from the victims bank account.

Abridge Road was closed due to flooding again, although this was rectified quite quickly due to the ability to now pump the water away.

Ride London, a very topical event, provided entertainment aplenty in Epping, and was attended by a number of villagers as spectators and as volunteers. On the flip side it was very difficult for motorists to arrive at their destinations.

The majority of this piece heavily relates to cars, speeding and parking. There have also been several pets lost and found. Many jobs advertised and individuals job searching. There have been laughs and tears, beautiful photos shared of the Northern Lights which we were blessed to witness, along with beautiful and often poignant poetry from our contributor Chris Peaskin.

Many thanks to all of you for reading, for sharing and caring, lots of Love

What Did People Do Before?

Toothpaste - Toothpastes, as we know them today, were created in the 19th Century - first mass-produced in jars in 1873 and later introduced in tube-form in the 1890s. While it may feel safe to assume that cavities were rife before the invention of toothpaste, you may be surprised to hear that many people tried to look after their gnashers!



The first 'toothpastes' are thought to have originated around 7,000 years ago. Tooth powders were developed to maintain hygiene in a number of ancient civilisations and varied in ingredients. Scholars believe the toothpaste of the ancient Greeks and Romans contained crushed bones, egg shells and myrrh while those in ancient China used ginseng, herbal mints and even salt. Chewing sticks, called *miswak*, made from plants were also used in Arab, Babylonian, Greek and Roman societies to improve oral health. In fact, miswak is still used in some countries today.

Refrigerator - As hunting for food diminished and agriculture developed around 12,000 years ago, people began to find new ways to keep food fresh. Preservation practices were used to avoid illness, such as salting, drying, smoking, pickling and fermenting. Some of these practices have been performed for thousands of years.



Over the ages many storage solutions were cultivated, including burying food. This method helped protect food from sunlight, heat and oxygen, three factors that can accelerate the rate that food spoils. Others chose to store their food in cool places, whether that be deep in caves, streams, nooks in wooden walls or inside cellars.

It wasn't until the 19th Century that the first ice boxes, the early precursor of the fridge, started to appear in England. The first home electric refrigerator was later produced by the American inventor Fred W. Wolf in 1913.

Toilet paper - The public toilets of ancient Rome were home to the *tersorium*, a wooden stick with a sponge attached. After using the *tersorium*, the sponge was cleaned by being dunked in a bucket full of water or vinegar. But this wasn't all. The ancient Greeks and Romans also used *possoi*, a toilet paper equivalent made from a small stone or a rounded fragment of ceramic - ouch! A drinking cup from 6th Century BCE even depicts a man using a *possoi*.



Greeks and Romans weren't the only bathroom pioneers. Other clues were found on an archaeological site near the old *Silk Road* in China, which contained 2,000 year old hygiene sticks. These sticks were often made from bamboo sticks wound with strips of fabric.

However, toilet paper was introduced in vastly different points of time around the world. Rice-based toilet paper began to be mass-produced for the Chinese imperial family in 1393. By comparison, it wasn't until 1857 that the USA would begin first mass-producing their own toilet paper - more than 450 years later!

Theydon Bois Horticultural Society

Our trip to Arundel was very successful: the coach was full, the weather was kind and the castle and grounds were splendid. The tulips were stunning.



Our next trip is to Waddesdon Manor on Wednesday 12th June and, at time of writing, there are still places left so please contact Margaret Jones on 01992 814797 if you want to join us. Our final visit of the year is to Hyde Hall for the flower show on **Thursday 1st August** and we are already taking bookings for it.

In May we had a talk by Lois Amos about the restoration of Bedford Park walled garden in Havering-atte-Bower, which she achieved almost single-handedly. It's now gardened for the benefit of the community and definitely worth a visit.

This year, the Annual Show and Tortoise Races is on **Saturday 20th July** in the Village Hall. The doors open to the public at 2pm. Please support us by coming along and if possible, entering something in the Show. The categories are vegetables and fruit, flowers and plants, cookery, handicrafts and photos. There are separate ones for the children and all the details can be found on our [website:www.tbhs.org.uk](http://www.tbhs.org.uk) We will be at the Hall in the afternoon of the 19th July to receive entry forms. Look forward to seeing you.

Your help Needed for a No-Parking Petition

For years Coppice Row, (the part that runs by the flats), remained car free even though no yellow lines exist there. Then, suddenly one car begets four others causing a complete shutdown of free-flowing traffic as both sides are affected. Going back years when the garage was replaced with flats, I personally contacted Essex County Council, asking for yellow lines, forecasting a situation exactly as we have just experienced. Essex County Council told me the garage was the reason it was left without lines, for access. When I countered with the fact that the garage is no more I was told nothing would change.

I have been amazed that so many years went by without more drivers thinking they could park for free. I do know that unless action is taken asap we will be stuck with this situation for ever more. Several other people complained to the Parish Council who took it seriously contacting Essex County Council asking for yellow lines to be drawn to stop the parking 'free for all'. Here is their response:

“Unfortunately, our organisation and local authority partners will not consider singular requests for intervention, and we will need a petition to indicate that a majority of households in the area, support the extension of restriction lines.”

Cllr Purkiss (Highways) said “ We are looking to introduce double yellow lines in Coppice Row outside Pavilion Court and along to Barnmead to improve lines of sight and traffic flow.”

READERS WE NEED YOUR HELP. Please support your village and make sure we have control over parking. Please visit www.theydonbois-pc.gov.uk and follow the link or alternatively call in to the Parish Office and sign the petition,

Christine Baker



Just for Fun



Rain Again

No surprises here, given the amount of rain this Winter and Spring and the picture of Gilles in our last edition outside the Village Hall, this Village News column focuses on the subject of rain.

Raining cats and dogs - Nobody knows for sure where the term "raining cats and dogs" comes from. The phrase dates back to the 18th century, but there are earlier examples, such as "raining dogs and polecats" or the Welsh expression *bwrw hen wragedd a ffyn*, meaning "raining old women and sticks".

The much more probable source of 'raining cats and dogs' is the prosaic fact that, in the filthy streets of 17th/18th century England, heavy rain would occasionally carry along dead animals and other debris. The animals didn't fall from the sky, but the sight of dead cats and dogs floating by in storms could well have caused the coining of this colourful phrase.



Gene Kelly's Singin' In The Rain Suit - "Singin' in the Rain" is one of the best and most



loved musical movies ever made and the suit worn by Gene Kelly in its most famous scene was sold at auction for £65,000 in December 2013. The owner had picked it up from an MGM costume sale for just \$10 in 1970. He said that all the costumes were hanging on racks as he was searching, he noticed Gene Kelly's water smudged name inside and realised it had to be the jacket from the film.

Where does the word rain check come from? -

This term comes from baseball, where in the 1880s it became the practice to offer paying spectators a rain check entitling them to future admission for a game that was postponed or ended early owing to bad weather. By the early 1900s the term was transferred to tickets for other kinds of entertainment, and later to a coupon entitling a customer to buy, at a later date and at the same price, a sale item temporarily out of stock.

Precious rain - In Botswana, the Setswana name for rain, pula, is also the name of the national currency because it is so rare, yet important to the economy. Pula are divided into 100 units known as thebe, meaning "raindrops".

The Rain in Spain Stays mainly in the Plain - is a song from the musical *My Fair Lady*. The song is a key turning point in the plotline of the musical. Professor Higgins and Colonel Pickering have been drilling Eliza Doolittle incessantly with speech exercises, trying to break her Cockney accent speech pattern. However, Spanish rain does not actually stay mainly in the plain. It falls mainly in the northern mountains.

The amount of water held in the atmosphere at any time is sufficient to produce about 2.5cm (1 inch) of rain over the surface of the earth.

The most rain to fall in a single 24 hour period is 1,850mm (74 inches) at Cilaos (on the Indian Ocean island of Reunion) between 15 and 16 March 1952.

News, Comments & Notices

Drew & Sons Open New Theydon Bois Office

We are pleased to announce the opening of our new Theydon Bois office. We are here to offer support and guidance to families 24 hours a day, 365 days a year.

- **Theydon Bois Office:** 1 Station Approach, Theydon Bois, Epping, CM16 7EU
- **Abride Office:** The White House, Market Place, Abridge, RM4 1UA



THEYDON BOIS SINGERS PRESENTS A SUMMER SHOWCASE



Programme to include songs from
Les Mis, Guys and Dolls,
and songs by Abba, The Beatles and Andrew
Lloyd Webber



TUESDAY 16TH JULY 2024 AT 7.30PM
THEYDON BOIS VILLAGE HALL TICKETS £12

For tickets Tel: 07899 992579
Email: theydonsingers@gmail.com

The Oak-Tree
Group of Schools



*A Family of Independent Schools
in the Heart of Epping Forest*

Coopersale Hall School Epping
Braeside School Buckhurst Hill
Oaklands School Loughton
Normanhurst School North Chingford

Register your child today

info@oaktreeschools.co.uk 020 8508 3109



Theydon Bois & District Rural Preservation Society

The Society was founded in 1943 to improve, protect and preserve Theydon Bois village. Since then, the Society has intervened where undesirable development has been proposed. The Society also joins with the Parish Council and the Epping Forest Conservators in discussing and seeking solutions to matters of common concern. We organise regular walks and illustrated talks.

Walks

On **Sunday 9th June** there will be a walk to **Theydon Garnon Church**, to enjoy the fete and Hog Roast, starting at the Village sign at the crossroads at 11.30am and returning at about 2.00pm.

On **Sunday 28th July** there will be a walk to **Ambresbury Banks**, the Iron Age fort in Epping Forest. We can speculate 'Is this where Boudica fought against the Romans?' Finds of pottery, flint and arrow heads suggest a construction date of around 700BC. We leave from the Village Hall at 2pm.



Talks

On **Friday 5th July** at 8.00pm in the Village Hall there will be an illustrated talk: *Lee Valley Regional Park - the history behind the land.*

The Lee Valley Park stretches from Ware in Hertfordshire in the North through the Queen Elizabeth Olympic Park to East India Docks Basin on the River Thames.



To continue to run the Society and to raise funds for projects that benefit the Village we need your support. Please join the Society for the year April 2024 to 31st March 2025, by completing the form below and paying your sub.



Name _____

Address inc Postcode _____

Email _____ Phone _____

Membership is £5 per Household, but any donation would be much appreciated.



Pay by BACS Sort Code 309089 A/c No. 49079268 or pay by Cash or Cheque (payable to Theydon Bois Rural Preservation Society), and send this to Martin Boyle 9 Elizabeth Drive, CM16 7HJ, or use the QR Code above to pay via an app .

Theydon Bois & District Rural Preservation Society *(continued)*

The Lee Valley has a long and winding history. This talk takes you from the hunter gatherers of the Neolithic era, Roman findings through times of invasion, the flour industry, gravel extraction and gunpowder production, and right up to the modern day. This history is still evident in the landscape today. In fact, the Regional Park's rich and special biodiversity wouldn't be here without its busy history.

On **Friday October 25th** there will be an illustrated talk on the 3 (three) Greenwich Meridians entitled *The mysterious Meridians of Highams Park & Chingford [and why the Greenwich Meridian is in the wrong place!]* A light-hearted story of navigation, Greenwich, anomalies, surprises and a plaque in Highams Park.

Three mysterious lines cross the centre of Highams Park. Few residents know of their existence as they walk across them every day. And yet, they are globally important. In 2019, local residents produced a large and unique bronze plaque to mark one of these lines (and it's probably not the one you expect). It is our belief that no other town (anywhere in the world) has a plaque like this!

Join us for an entertaining, light-hearted, presentation about the lines, their history, their purpose and why Highams Park finds itself in a rather special place. Find out about the plaque and where it is installed.

GreenShoots

This is the youth arm of Theydon Bois Rural Preservation Society. The initiative is being led by Nicola Maher who is a local primary school teacher. Nicola grew up in Theydon Bois, as did her father Bob Day who was the Society's Chairman and President for a number of years.

The aim is to provide outside opportunities for children up to 12 years old, and their families to enjoy and learn about the history and natural characteristics of this very special place where we live. Activities involve learning about trees and plants in our local environment, mini beast hunts, den building, craft activities and observing signs of the season.

There is no charge for GreenShoots sessions, these are very relaxed, family-friendly sessions and parents stay with their children.



Village News from 10 years Ago in 2014

Theydon's Man of Mirth -You may not be aware that Theydon Bois is the long-time home of the most successful English playwright since Shakespeare! Village News recently met Ray Cooney in the beautiful house which has been home to Ray and his wife, Linda for 51 years.

Ray Cooney has been making people laugh for much of his 82 years on this planet in a myriad of roles whether it be as actor, director, playwright, producer, and screenwriter or theatre owner. He is internationally recognised as the finest living writer of the form of theatre known as 'Farce' and many actors have benefited from his writing genius and influence as well as actor/director.



Bob Day was born in Theydon & recalls some of his early life in the Village - The War years (continued) - Living next door to us in Blackacre Road was the Broadbent family. Fred Broadbent was the Registrar of Births, Deaths and Marriages somewhere in East London. Also, taking great interest in the village and drama, his children, Pamela, Colin and Anita were all our playmates and friends Colin and I swapped our comics 'Beano' and 'Dandy' each week. **The Army and Retreats** - The Army moved into the village, Many soldiers were housed in the tea rooms of the retreats and in huts erected in the forest. Their army trucks were all along the avenue, both sides of the trees, partially hidden by the trees. In the mornings many soldiers would be sitting along the ditch near Woburn Avenue, shaving as we walked off to school.



Theydon's Revived Pancake Day Races Continue Despite Waterlogged Green - It was a day full of fun and laughter on Tuesday 4th March when Theydon's Pancake Day Races in their revived form took place for the fourth year running. Former Parish Council Chairman and Former School Governor John Eaton again helped organise the event with Theydon Bois Primary School's new head teacher Lesley Lewis (pictured opposite). Problems arose this year due to the Green by the Avenue of Trees, where the races are usually run, being waterlogged, but thanks to the efforts of John and Lesley the event was finally staged in the school playground.



Days Out From Theydon - Kew Gardens by Riverboat

The summer months are the perfect time to visit Kew Gardens. From Theydon there are several ways to get to Kew by Tube and Overground rail services but the most relaxing and picturesque route is by a Thames River Boat from Westminster pier. The trip takes approximately one and a half hours. The Captain gave us an interesting commentary as we passed by a number of iconic London buildings including: The Houses of Parliament; Lambeth Palace, the London residence of the Archbishop of Canterbury since the 13th century; the Tate Gallery, the famous art gallery established by Sir William Tate the sugar millionaire; the Royal Hospital Chelsea, designed by Sir Christopher Wren and home to the Chelsea pensioners; Battersea Power Station, now being restored and developed into luxury apartments.



News, Comments & Notices

Theydon Bois Drama Society has completed another successful season, with three contrasting shows. In October 2023 we presented the stage version of the hugely popular TV comedy *The Vicar of Dibley*, which broke all previous records for ticket sales. In January our original musical compilation show, *Iconic*, was very well received. And we have just presented the tense and emotional Terence Rattigan classic, *The Deep Blue Sea*.

- The Society won in five categories in the NODA (National Operatic and Dramatic Association) London District No.6 Awards for 2023-24:
- Best Comic Performance: Rebecca Manning in *The Vicar of Dibley*.
- Best Programme: *The Vicar of Dibley*.
- The London Innovation Award: Scenes from *A Midsummer Night's Dream*.
- The Shelly Lemesh Unsung Hero Award: Andrew Pegrum.
- The Sylvia Rawlings Award for Lifetime Contribution to Amateur Theatre: Simon Gilbert.

The NODA London Region Awards, for which all of the above were nominated, were presented on 16th June. Next up, on October 17-18-19, is Alan Bennett's hilarious farce, *Habeas Corpus*. Tickets go on sale on 2nd September and can be booked by visiting our website, www.theydondrama.org, or phone 01992 919038.

Dan Joins the Team at Theydon Dental Surgery



Dan (*Daniel van der Westhuizen*) graduated from the University of Pretoria in 1984 where he worked in his own practice for 11 years.

In 1997 he relocated to the UK where he worked first in Docklands and then in his own flagship private practice in Danbury for 20 years, where he excelled in all disciplines of dentistry.

Currently he is also at the Nightingale Clinic where he performs minor oral surgery. He is pictured opposite with receptionist Dainora.

Dan believes in ongoing education and undertakes frequent refresher courses to stay informed of new technology and materials. His considerable experience and skills will ensure that the practice continues to provide high quality dental services. He is married and has two children and has lived in Theydon Bois since relocating to the UK. Outside of dentistry, Dan is a dedicated beekeeper and enjoys fly fishing.

News, Comments & Notices

Friends of St. Clare Quizzes The Loughton Friends of St Clare was founded in 1994 by Marilyn Coleclough to raise funds for the building of the Hospice Centre at Hastingwood. The Hospice was opened in 2000 and provides many vital services for the local community to support patients and their families. Marilyn and her small group of volunteers

held a variety of events and also initiated street collections which took place in Loughton, Debden, Buckhurst Hill and Theydon Bois.

Our spring and autumn quizzes in Theydon were part of this fundraising throughout and when Marilyn sadly died in 2019 and the group folded we had no hesitation in continuing to hold the quizzes. These are widely supported by the local community, for which we are most grateful. We think the pictured cheque shows a record contribution for one of our quizzes and we look forward to seeing large numbers of St Clare Supporters at our **next quiz on 12th October.**



Roding Rotary Club who meet on Monday nights at 6 30pm at the Queen Victoria Public House were delighted recently to present a cheque for £1075 to the Lilly Foundation from funds raised at their Youth Makes Music concert in Chigwell School back in March featuring pupils from Chigwell School itself, Davenant School, the Stage Coach Academy, West Hatch School and Avon House.

The Lily Foundation was founded in 2007 by Liz Curtis in memory of her daughter Lily, who died from mitochondrial disease at 8 months old. Mitochondria occurs when our bodies aren't able to provide the energy our cells need to work properly. It's a metabolic disorder – simply put that means one of the processes by which your body makes, uses or disposes of certain materials is abnormal. Without the right amount of energy, our cells cannot do their job and they stop performing and start to die. It can be very serious and often fatal.

Liz Curtis has worked tirelessly for the Lily Foundation which today supports over 1200 families and is run by a small team of dedicated staff backed by a medical board drawn from the UK's top centres for mitochondrial research, and forms a vital link between patients, doctors and medical science bodies so we were delighted to be able to support the Foundation in our own small way. Pictured above is Fan Maskell, organiser of Roding's Youth Makes Music concert with Liz Curtis.



News, Comments & Notices

Frank Foster's Nicolas Runs for Independent Age Charity



Nicolas Kee Mew, the dedicated Home Manager of Frank Foster House care home in Theydon Bois, led the way through the streets of London on the 7th of April 2024, as he took on the challenge of the Half Marathon for Independent Age. The residents and staff of Frank Foster House rallied together, demonstrating their unwavering support and commitment to raising funds for Independent Age, a charity devoted to enriching the lives of older people across the UK.

His leadership and enthusiasm inspired the entire Frank Foster House and Runwood Homes community, fostering a sense of unity and purpose as they worked tirelessly to make a meaningful impact.

“The opportunity to participate in the Half Marathon for the third time and raise funds for Independent Age was both a personal challenge and a profound privilege. I have been fundraising for Independent Age for more than thirteen years. To have the support of the residents and staff of Frank Foster House was truly humbling. Together, we embarked on this journey not only to raise funds but also to champion the dignity and well-being of older individuals in our society.”

Resident Joan, expressed immense pride in Nicolas Kee Mew’s efforts, stating, “We are very proud of Nicolas.” Her words encapsulate the admiration and support felt by all within Frank Foster House and Runwood Homes group.

Children’s Summer Holiday Camp

HIGHLY RATED CHILDREN’S MULTISPORT ACTIVITY WEEKS

Ages
4-14yrs

Weekly cost **£145** or daily rate **£32**

Ofsted
Register

Held at Debden Park School

Willingale Road, Loughton IG10 2BQ

Time: 10am to 3.30pm

Week 1: 29th July to 2nd August 2024

Week 2: 5th August to 9th August 2024



Childcare vouchers/Tax-Free scheme//Childcare grant payment can be accepted

For bookings, payment please goes onto our website: www.multisportsactivityweeks.co.uk or

Email - multisportsactivityweeks@gmail.com or contact Eddie - Tel 07764747069

News, Comments & Notices

Repair Café continues to run really well alongside Community Cuppa



The Repair Café continues to run really well alongside The Community Cuppa on the last Wednesday of the month. In our first year over 130 customers brought 155 items to the Repair Café. Sometimes, sadly, some items are not repairable but this one was!

Can You Help? - Do you have a 3/4 drawer filing Cabinet (must be lockable) or a metal cupboard that you could donate to the REPAIR CAFÉ for storing tools and medical equipment. We'd love to hear from you if you have. **Please contact Pat(rick) on 07970 551360 or email: matchlesspat@aol.com**

The Repair Café runs in conjunction with Community Cuppa at St Mary's Church Hall. Community Cuppa looks forward to welcoming you for homemade cakes, great company and a lovely community morning. All welcome. Here's the dates for your diary.

JUNE 26	JULY 31	AUGUST 28
SEPTEMBER 25	OCTOBER 30	NOVEMBER 27 (The Christmas one!)
No Community Cuppa in December		

Both Community Cuppa and repair Café are not-for-profit activities and are supported by our Parish Council

THE FAIRY TALE FACE PAINTER

SUNDAY 23 JUNE 3-6 PM
Theydon Bois Village Hall • CM16 7ER

flower FAMILY DISCO

Bubble Show & Stilt Walker • Balloons • Foam Colouring in • Face painting
Tuck Shop & Licensed Bar
£12 per ticket

Power

@THEFAIRYTALEFACEPAINTER
www.thefairytalesfacepainter.com

theWI
INSPIRING WOMEN
1915 FOR 100 YEARS 2015

Theydon Bois Women's Institute

19th June
'Hitchcocks Leytonstone' Mr Gary Lewis
17th July
'Behind the Scenes' Mrs Marion Pettett
18th September
'Suffragette & Petticoat Rebellion' Ms Lucy Allen
None in August

Village Activities 2024

The information, opinions and views presented in Village News and on the Village Website reflect the views of the authors and contributors of the articles and publication of articles, advertisements or product/services information does not constitute endorsement or approval by Village News or the Parish Council.

23 June	Flower Family Disco - V Hall - page 39
26 June	Community Cuppa & Repair Café - St Mary's Church Hall - page 39
30 June	Tennis Club Open Day - page 22
30 June	Theydon Bois Open Gardens - page 21
5 July	Rural Preservation Society Talk - Village Hall 8pm - page 33
6 July	Litter Pick - starts at Village Hall 9am
14 July	Donkey Derby on Village Green 12 to 4.30pm - page 14
16 July	Theydon Bois Singers Summer Showcase - Village Hall - page 32
20 July	Horticultural Show - Village Hall - for Talk & Activities - see page 29
28 July	Rural Preservation Society Walk - Ambresbury Banks - see page 33
31 July	Community Cuppa & Repair Café - St Mary's Church Hall - page 39
3 Aug	Litter Pick - starts at Village Hall 9am
8 Aug	Toy & Train Collectors Fair - Village Hall
28 Aug	Community Cuppa & Repair Café - St Mary's Church Hall - page 39
7 Sept	Litter Pick - starts at Village Hall 9am
12 Oct	St Clare Quiz - Village Hall - page 37
17-19 Oct	Drama Society - Habeas Corpus - Village Hall - page 36
Various	Mobile Library - page 36 Women's Institute - page 39



Copy for Village News - email the editor Tony Ames at
theydonnews@virginmedia.com
 or send to c/o Parish Clerk, Parish Office as below



Theydon Bois Parish Council

Theydon Bois Village Hall, 01992 813442 mob 07927 581856

email - **theydonbois-pc.gov.uk**



Thanks to our Sponsors : Theydon Bois Pharmacy, Indian Ocean, Theydon Bois Balti House, Martin Shepherd Solicitors, Theydon Bois Dentists, Butler & Stag, Drew & Son, Home Instead, Woodland Grove Care Homes & Neil King
 See pages 6, 7, 12, 13, 19.

NEXT VILLAGE NEWS COPY DEADLINE - 1st September 2024